



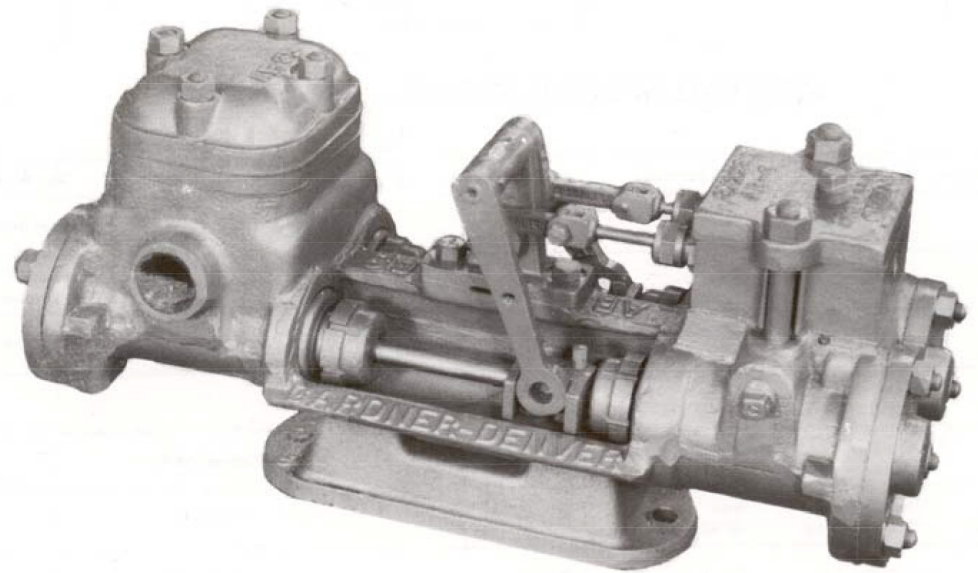
PUMPS

DAA (AA-AA) DUPLIX STEAM PUMP

Air • Steam • Gas Driven

SPECIFICATIONS

No. of Pistons	2
Stroke Length	3"
Pump Weight	125 lbs. (57 kg.)
Fluid Cylinder Connections	
Suction	1"
Discharge	3/4"



SIZE						FLUID END SYMBOL	STEAM END SYMBOL	*DISPLACEMENT									FLUID END MAXIMUM PRESSURE	
STEAM CYLINDER DIAMETER		FLUID CYLINDER DIAMETER		STROKE LENGHT				PER REVOLUTION		NORMAL			MAXIMUM					
in.	mm.	in.	mm.	in.	mm.			gal.	liter	RPM	GPM	LPM	RPM	GPM	LPM	PSI	Kg/cm2	
TUBE-LINED DESIGN																		
2 1/2	63.5	1 1/2	38.1	3	76.2	AA	AA	.0867	.328	50	4.3	16.3	100	8.7	32.9	250	17.58	

* Theoretical displacement with rods deducted (no slippage considered).

Specifications subject to change without notice.

Fluid pressures obtainable in service depend upon the available steam or air pressure and the ratio between the areas of steam and fluid cylinders.

STANDARD FITTINGS – Pumps are furnished with all necessary stuffing box packing, valve rod packings, fibrous piston packings for water only for temperatures up to 180 F, drain valves and plugs, and grease cups for rocker shaft bearings.

DAA (AA-AA)

DUPLEX STEAM PUMP

SPECIFICATIONS

COMPONENT	GENERAL SERVICE	BOILER FEED	OIL SERVICE	WATER SERVICE
CYLINDER	IRON	IRON	IRON	IRON
LINERS	IRON	BRONZE	IRON	BRONZE
SUCTION MANIFOLD	INTEGRAL WITH CYLINDER	INTEGRAL WITH CYLINDER	INTEGRAL WITH CYLINDER	INTEGRAL WITH CYLINDER
DISCHARGE MANIFOLD	INTEGRAL WITH CYLINDER	INTEGRAL WITH CYLINDER	INTEGRAL WITH CYLINDER	INTEGRAL WITH CYLINDER
PACKING	BRAIDED POLYMER	BRAIDED POLYMER	BRAIDED POLYMER	BRAIDED POLYMER
PISTON FOLLOWER	IRON FOLLOWER TYPE	BRONZE FOLLOWER TYPE	IRON SOLID TYPE	BRONZE FOLLOWER TYPE
PISTON ROD	STEEL	BRONZE	STEEL	BRONZE
STUFFING BOX	CAST IRON	CAST IRON	CAST IRON	CAST IRON
VALVE	IRON CAP TYPE	BRONZE CAP TYPE	IRON CAP TYPE	BRONZE CAP TYPE
VALVE SEATS	IRON	BRONZE	IRON	BRONZE

STEAM END COMPONENT MATERIAL

CYLINDER	CAST IRON
PISTON	CAST IRON
PACKING	BRAIDED POLYMER

CONNECTIONS

INLET	3/8"
EXHAUST	1/2"

* Materials listed are furnished as standard equipment. Alternate materials available upon request.

When LUBRICATION is required:

Steam or Natural Gas - Use mechanical lubricator.
Compressed Air - Use line oiler.

STANDARD FEATURES

- Rods and pistons.
- Liners and valves.
- Wood skids.
- All necessary drain cocks and plugs.

OPTIONAL FEATURES

- Lubricator
- Fluid liner pullers
- Valve seat pullers
- Surge chamber
- Steel skid
- Stainless steel valves

MODEL DESIGNATIONS

MODE DESIGNATIONS MODEL	AB-AB
STANDARD FITTED	N/A
OIL SERVICE FITTED	DAAA
ALL IRON FITTED	N/A
FULLY BRONZE FITTED (WATER SERVICE)	DAAB
DIAMETER OF STEAM CYLINDER	2 1/2"
DIAMETER OF FLUID CYLINDER	1 1/2"
LENGTH OF STROKE	3"
FLUID CYLINDER TYPE	CAST IRON ONE PIECE

CONNECT WITH US

| gdenergyproducts.com

| 1-866-GDPumps

| +1-918-GDPumps