

## MODULES

# Y-SHAPE DRILLING MODULE

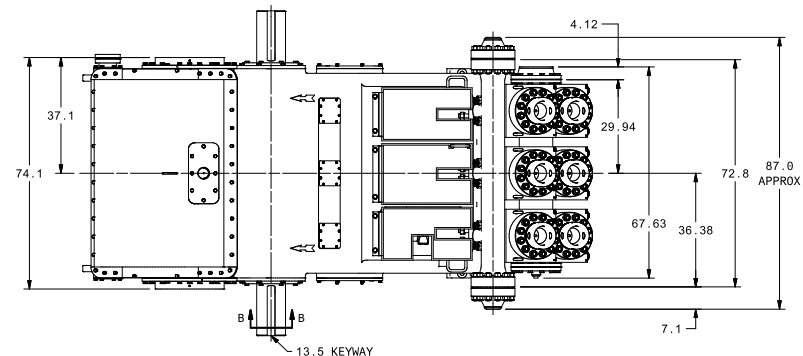
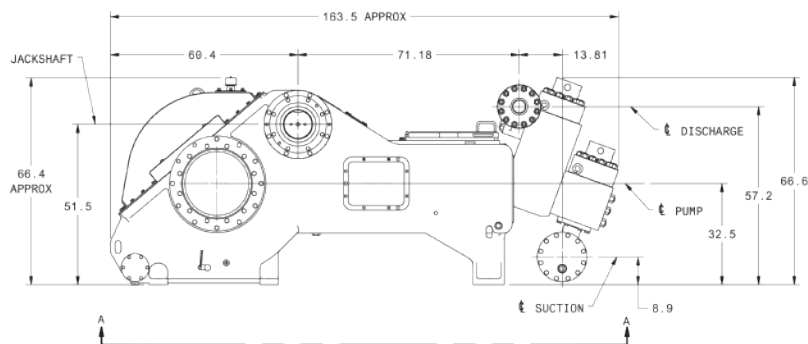
With decades of drilling pump expertise, GD Energy Products continues to deliver innovative solutions with our patented, Y-shape Drilling pump module. Designed with a unique internal bore geometry, this module maximizes flow efficiency while reducing operational stress that often leads to failure in competing two-piece designs.

After years of field-proven performance on our GD Energy Products PZ 2400 pumps, we are pleased to offer this module for our PZ 1600 and PZ 2000 pumps!

## STANDARD FEATURES

- Rated for 7,500psi Operating pressure
- API 7 Valve assembly reduces fluid velocity
- Bore seal technology for improved valve cover, seal carrier, and wear plate seal performance
- Two-piece design eases routine maintenance
- Patented internal geometry maximizes flow efficiency
- Utilizes standard GD Energy Products module hardware
- Optimized flow pattern reduces stress at cross-bore intersection
- Replaceable Suction and Discharge module design

## SPECIFICATIONS

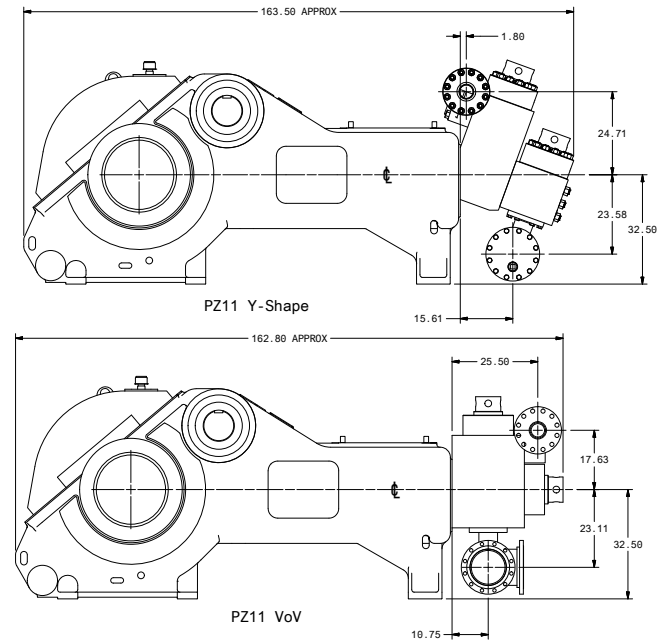
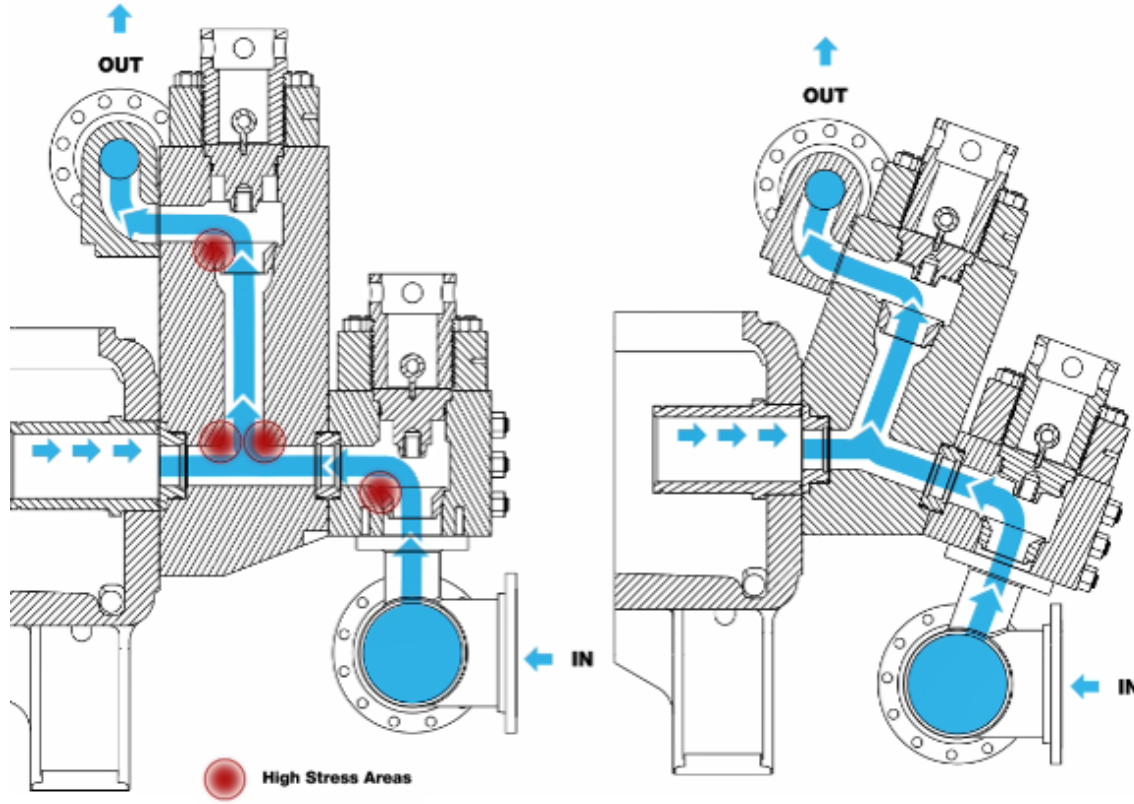


**GD**  
ENERGY PRODUCTS



# Y-SHAPE DRILLING MODULE

## SPECIFICATIONS



## L VS Y-SHAPE FLOW COMPARISON

As illustrated, the cross-bore intersection within a L-shape module is an area of high stress concentration due to the intersection's radius.

GD Energy Products' patented Y-shape design addresses this issue by opening up the intersection radius which allows the fluid to flow smoothly through the module resulting in reduced stress and maximum flow efficiency.