

CONSUMABLES



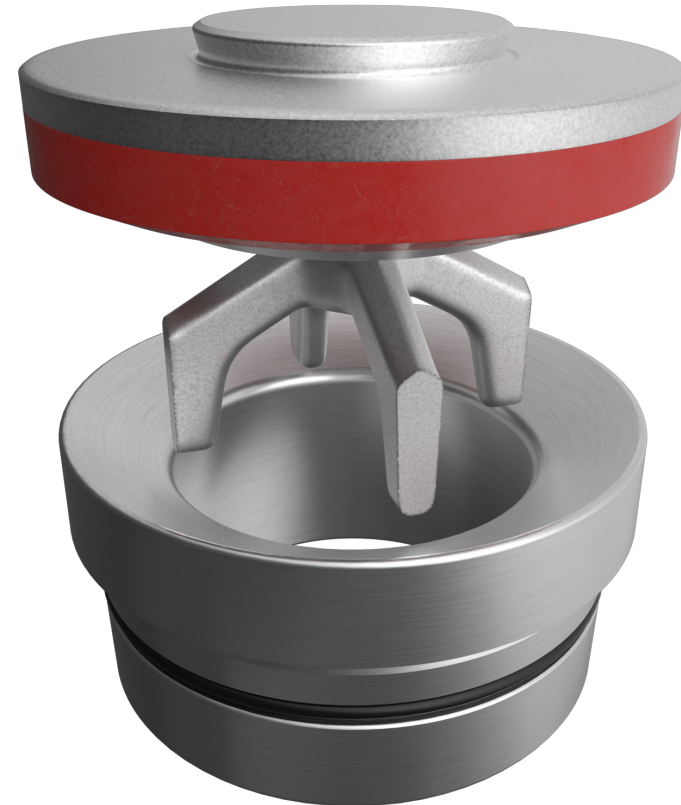
REDLINE+ VALVES & SEATS

FRAC & WELL SERVICE

GD Energy Products Redline+ Valves & Seats are designed for maximum performance and reliability, featuring a patent-pending design and optimized metallurgy for abrasion and chemical resistance.

Manufactured in the USA, GD Energy Products Redline+ Valves & Seats have outperformed the competition in numerous basins. When run as a pair operating under harsh environments, Redline+ Valves & Seats demonstrated consistent performance, fewer maintenance intervals and longer life.

Our Redline Series of frac and well service pump consumables serve as the perfect complement to our performance-proven pumps and competitor pump models. With our “ready inventory” promise, our Redline consumable products are readily available and offer unparalleled quality and reliability.



FEATURES & BENEFITS

- Rated for pressures up to 20000 psi and 250°F
- Patent-pending design
- Full open design for max flow efficiency
- Compatible with all common frac water chemistries
- Optimized metallurgy for abrasion and chemical resistance
- Available in P-4 and P-5 sizes
- Compatible with GDEP provided tungsten seats
- Compatible with GDEP and competitor fluid ends
- 37% increase in number of strokes compared to the competition in the Permian Basin
- 25% increase in number of hours compared to GDEP’s V3 valve in the Haynesville Basin

P-4 Part #s		P-5 Part #s	
Valve	PP1222694	Valve	PP1222698
Seat	PP1178891	Seat	PP1178871
Spring	918VP023	Spring	918PN05