

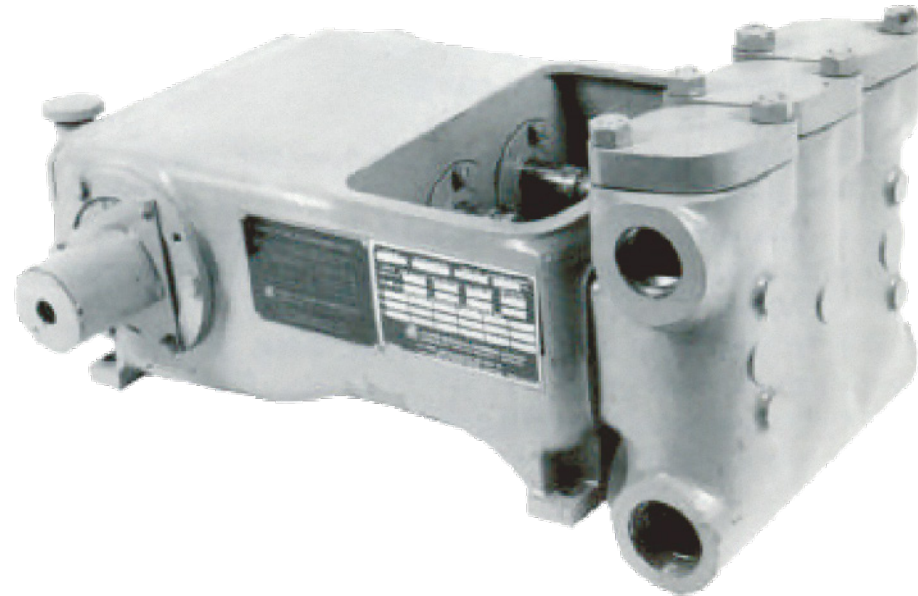
# PUMPS

## TQB (GD-25T) CONTINUOUS DUTY PLUNGER PUMP



### SPECIFICATIONS

Maximum BHP	27 (20 kw)
Maximum RPM	600
Number of Plungers	3
Stroke Length	2" (5.1cm)
Plunger Load	2,680 lbs. (1,216 kg)
Discharge Hydrostatic Test Pressure LP	3,400 psi (239 kg/cm2)
Oil Capacity	2.5 gal. (9.5 liters)
Pump Weight	570 lbs. (259 kg)



PLUNGER SIZE		MAXIMUM PRESSURE		DISPLACEMENT PER REVOLUTION		GALLONS PER MINUTE/LITERS AT THE FOLLOWING RPM											
						225		300		400		500		550		600	
in.	mm.	PSI	kg/cm2	gal.	liters	GPM	LPM	GPM	LPM	GPM	LPM	GPM	LPM	GPM	LPM	GPM	LPM
LP ALUMINUM BRONZE (TQCD) AND LP CARBON STEEL (TQCB) FLUID ENDS																	
2.25	57	675	47	0.103	0.389	23	88	31	117	41	156	52	195	57	214	62	234
2.00	51	855	60	0.082	0.310	18	70	25	93	33	124	41	155	45	171	49	186
1.75	44	1115	78	0.062	0.234	14	53	19	70	25	94	31	117	34	129	37	141
1.50	38	1520	107	0.046	0.174	10	39	14	52	18	70	23	87	25	96	28	104
1.25	32	2185	153	0.032	0.121	7	27	10	36	13	48	16	61	18	67	19	73
1.00	25	2250	158	0.020	0.075	5	17	6	23	8	30	10	38	11	42	12	45

Based on 90% mechanical efficiency and 100% volumetric efficiency. For applications within shaded area contact Customer Service.

Specifications subject to change without notice.

# TQB (GD-25T)

## CONTINUOUS DUTY PLUNGER PUMP

### STANDARD FEATURES

- Oil level gauge
- Crankshaft type construction
- Double-extended crankshaft 2.0" (5.08 mm) dia., 3.25" (8.25 mm) long
- Keyway (L x W x H) 3.47" x .625" x .36" (8.81 x 1.59 x .91mm)
- Turbo lubrication
- Suction and discharge connections on either side
- Stainless steel clamp connections between plungers and push rods
- Removable stuffing boxes with threaded glands
- Cradle cover
- Colmonoy, ceramic, or tungsten carbide plungers
- Disc style aluminum bronze, stainless steel, or monel valves
- Wing-guided aluminum bronze, steel, or stainless steel valves
- Non-adjustable packing standard. Kevlar or double stack packing optional

### ACCESSORIES

- Mechanical lubricator for stuffing box packing
- Suction stabilizers
- Discharge pulsation dampeners
- Discharge pressure relief valve
- Fabricated steel skid under pump and drive
- V-belt drive assembly
- Totally enclosed metal belt guard (OSHA approved)
- Valve seat puller
- Valve seat driver
- Valve cage wrench
- Companion flanges

	Suction Manifold	Discharge Manifold
TQBA	2 ½" NPT	2" NPT
TQBB	2 ½" NPT	2" NPT
TQBD	3" 900# RTJ	2" 1500# RTJ

Note: All installations must contain a pressure relief valve in the discharge line near the pump to help prevent breakage.

Dimensions: Length 33.25", Width 25.50", Height 16.375"

### MATERIAL SPECIFICATIONS

Service	Type	Cylinder	Packing	Stuffing Box	Component	Material
TQBA	Low Pressure	ASTM B-148-9D Aluminum Bronze	Buna-N Non-Adjustable Type	ASTM B-148-9D Aluminum Bronze	Crankshaft Connecting Rods	Cast Nodular Iron Cast Nodular Iron
TQBB	Low Pressure	ASTM A536 Cast Nodular Iron	Buna-N Non-Adjustable Type	ASTM A536 Cast Nodular Iron	Crossheads Frame	Cast Nodular Iron Cast Iron
TQBD	Low Pressure	AISI 1035 Carbon Steel	Buna-N Non-Adjustable Type	AISI 1035 Carbon Steel	Bearing-Main Bearing-Crankpin Bushing-Crosshead	Tapered Roller Steel Lined with Tin & Babbit Bronze

\*Materials listed are furnished as standard equipment. Alternate materials available upon request.