

# REDLINE+ VALVES & SEATS

PERMIAN BASIN

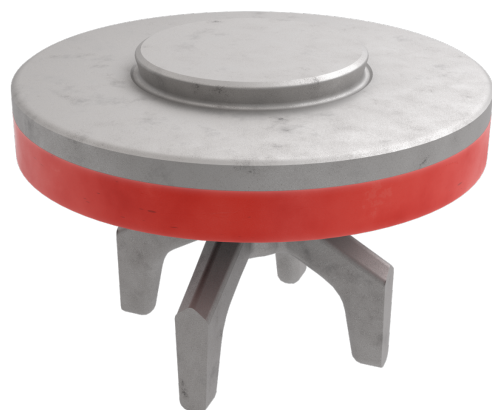


WE BUILD CONFIDENCE

## FIELD TEST CONDITIONS

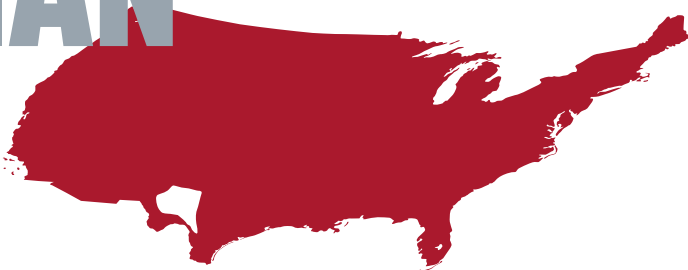
SIZE

P4



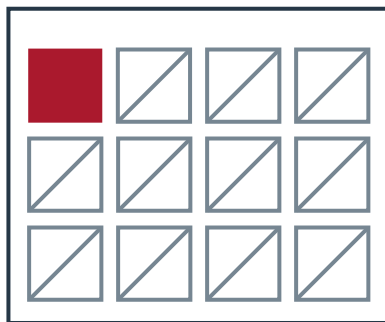
LOCATION

PERMIAN  
BASIN



TIMELINE

1  
MONTH



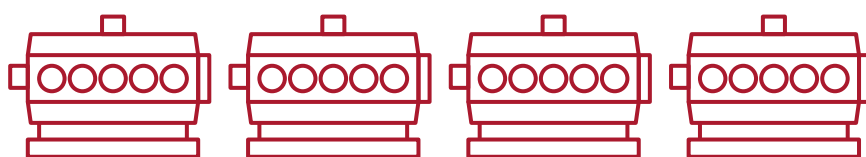
VOLUME

600K LBS/STAGE

NUMBER OF PUMPS

4

Quintuplex



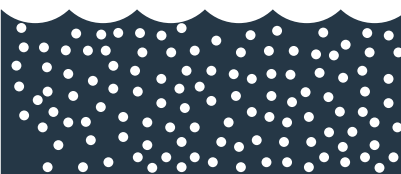
AVERAGE OPERATING PRESSURE

10,500 PSI



TYPE OF SAND

100 MESH

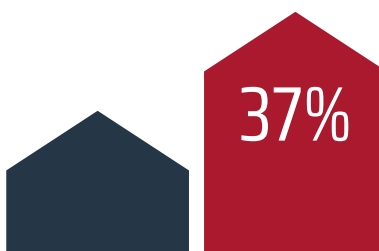


PRODUCED WATER

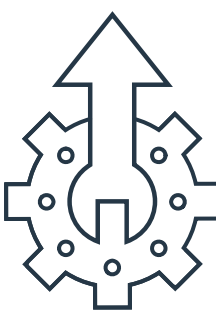
50%

## PERFORMANCE AGAINST COMPETITOR

INCREASED PERFORMANCE LIFE



37% INCREASE IN NUMBER OF  
STROKES BETWEEN CHANGES



IMPROVED PERFORMANCE  
**CONSISTENCY** AND MAXIMIZED  
OVERALL VALVE **LIFE**

## CUSTOMER FEEDBACK



“AFTER CONVERTING OUR FLEETS  
OVER TO **REDLINE+** VALVES &  
SEATS, WE SAW A **20% DECREASE**  
IN V&S CONSUMPTION”  
– PARTS MANAGER