

EXTREME DUTY DRILLING VALVES

Eagle Ford Shale

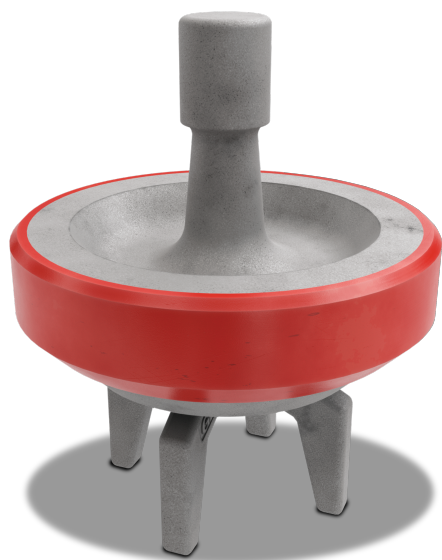


WE BUILD CONFIDENCE

FIELD TEST CONDITIONS

SIZE

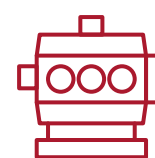
API 7



NUMBER OF PUMPS

1

GDEP
PZ-1600
with HD
modules



LOCATION

EAGLE FORD
SHALES



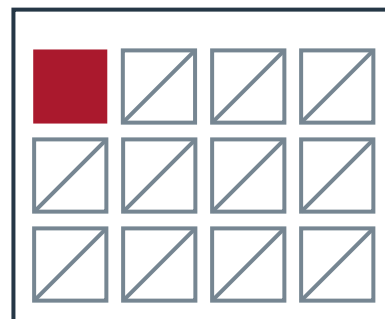
MAXIMUM OPERATING PRESSURE

6,500
PSI



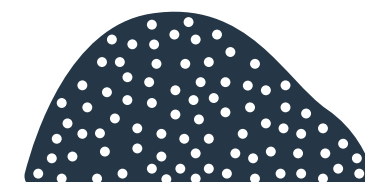
TIMELINE

1
MONTH



MUD TYPE

OIL BASED MUD



FLOW RATE

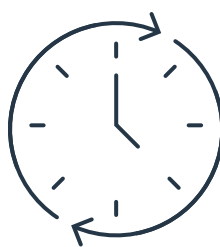
800 GPM

DOWNHOLE TEMP

UP TO 320°F

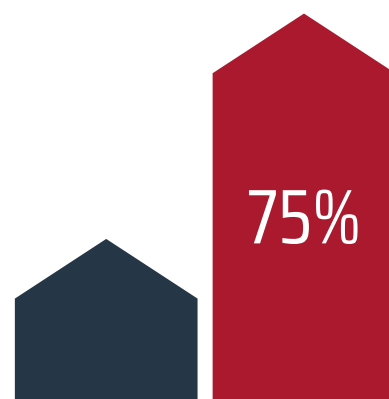
PERFORMANCE

FIELD DATA

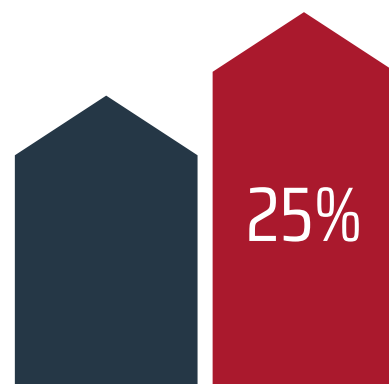


800+ AVERAGE HOURS

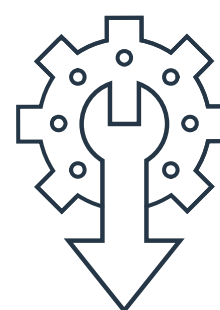
INCREASED PERFORMANCE LIFE



75% OVER GDEP
HEAVY DUTY VALVE



25% OVER COMPETITOR



REDUCED INVENTORY,
CONSUMPTION &
MAINTENANCE LEVELS